

Product Information Packet

February 5, 2024

Data shown is for the current revision model #. Ensure your nameplate model # matches.

Model Number:	WPN-DF213TSC-2C
Catalog Number:	BC2N7.5V5C
Connection Diagram:	See Page 4
Outline Drawing:	See Page 3

Table of Contents

Specification	01
Performance Characteristics	02
Outline Drawing	03
Connection Drawing(s)	04

Marks:

MODEL NUMBER:	BC2N7.5V5C	Estimated Weight:	142 Lbs
Outline Drawing:	See Page 3	Time Rating:	S1
Connection Diagram:	See Page 4	Enclosure:	TEFC
Design Code:	B	Encl Construction:	GP
Type:	KS	Ambient Max(°C):	40
Frame:	213TC	Alt Ambient Max(°C):	40
Phases:	3	Insulation Class:	F
Poles:	2	NEMA Design:	B
Output Power:	7.5HP	Nominal Efficiency:	89.5 %
RPM:	3515	Guaranteed Efficiency:	87.5 %
Voltage:	575	3/4 Load Efficiency:	89.5 %
Hertz:	60	KVA Code:	G
Amps - FL:	6.86	Max KVAR:	6.3
Service Factor:	1.25@60Hz	Power Factor:	90%
Alt Service Factor:	1.15	Bearing - DE:	6208-ZZC3
		Bearing - ODE:	6208-ZZC3

Enclosure is Totally Enclosed Fan-Cooled

Stamped Nameplate Notes:

12-60HZ CONSTANT TORQUE, 6-60Hz VARIABLE TORQUE

50HZ DATA:
RPM 2925
SF 1.0

CSA APPROVED FOR CLASS I;DIVISION 2; GROUPS A, B, C & D,ZONE 2; GROUPS IIA & IIB T3 WITH VFD

Additional Information:

F1/F2/F3/ROUND BODY MOUNTING USING REMOVABLE/REPOSITIONABLE FEET
INVERTER DUTY: CT5:1(12Hz~60Hz)@100%TN, CT15:1(4Hz~60Hz)@66.7%TN, VT20:1

Performance Characteristics

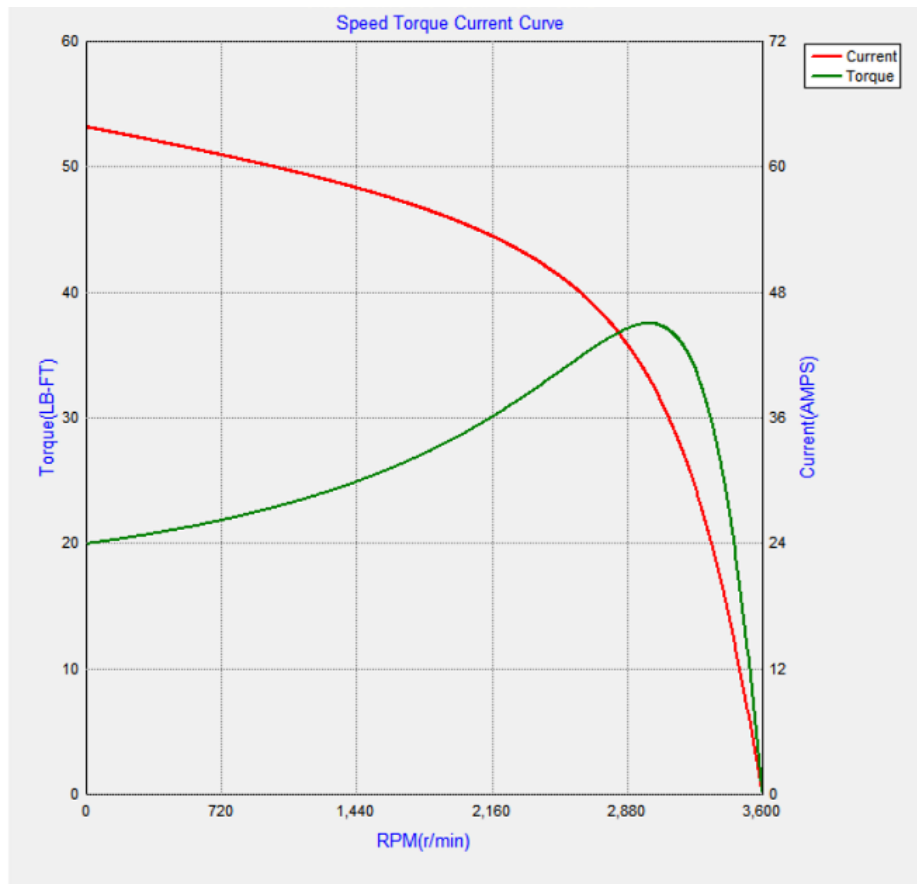
Marks:

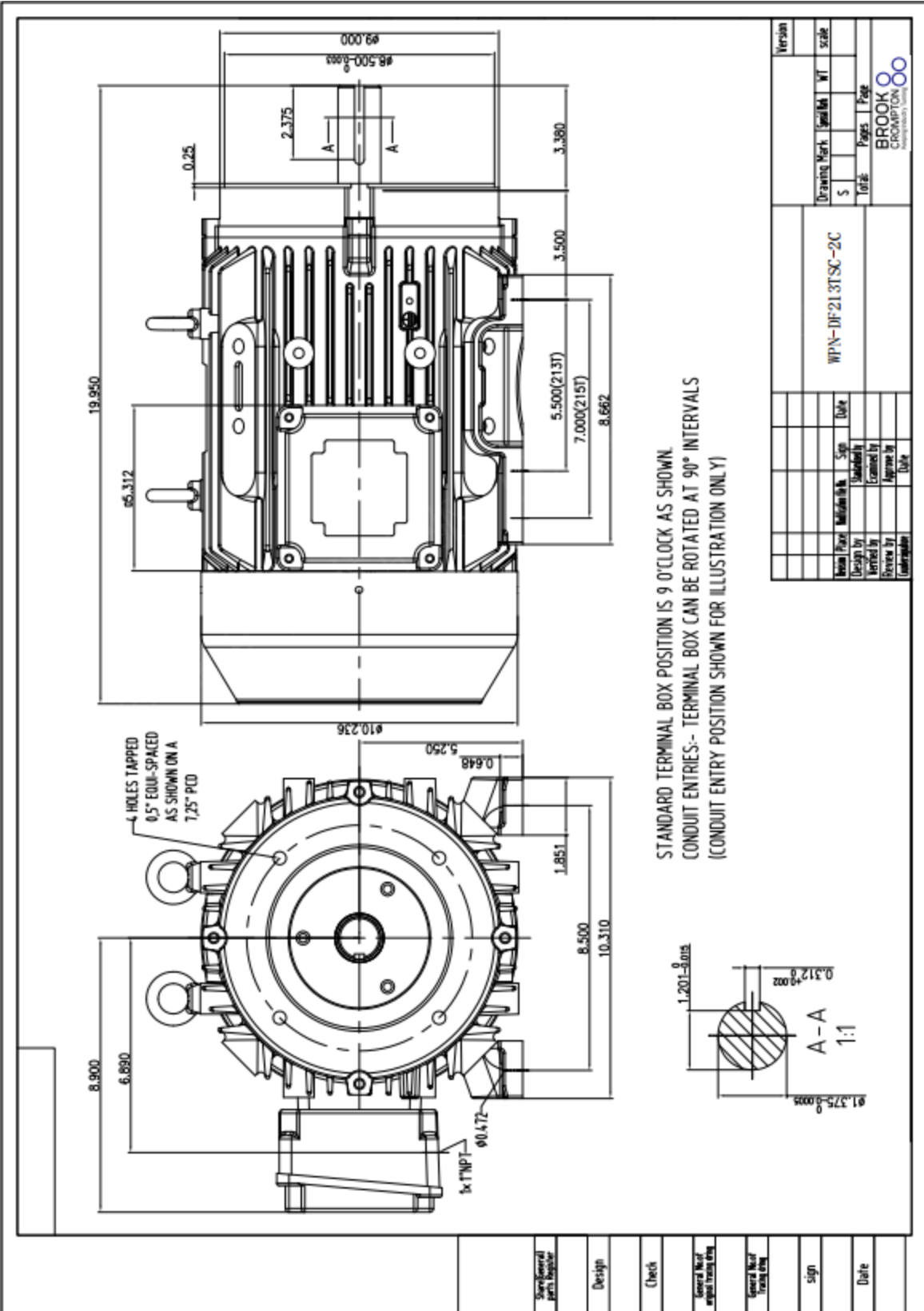
LOAD %	150.0	125.0	100.0	75.0	50.0	25.0
% EFF	87.86	88.81	89.53	89.86	89.41	86.15
% PF	90.71	90.69	90.05	87.92	82.49	64.72
AMPS(460V)	12.99	10.71	8.56	6.55	4.68	3.10

TORQUE(FL) LB-FT 14.94 TORQUE(LR)%FL 200 TORQUE(BD)%FL 350
 AMPS(LR 460V) 67.1 PF AT START 36

Other Useful Information for Application:

Rotor Inertia: Lb-Ft ² (Kg-m ²):	0.344(0.014)
Max load inertia: Lb-Ft ² (Kg-m ²):	
Load Type:	Square Torque/Speed Characteristic
Voltage:	100%
Number of starts per hour:	2 Cold or 1 Hot
Acceleration Time with maximum inertia (sec):	8.7
Safe stall time (sec): Cold/Hot	33/13





Version	Drawing Mark	Serial No	WT	scale															
	5																		
<table border="0" style="width: 100%; font-size: small;"> <tr> <td style="width: 30%;">Total</td> <td style="width: 20%;">Pages</td> <td style="width: 10%;">Page</td> <td style="width: 10%;"> </td> <td style="width: 10%;"> </td> </tr> <tr> <td colspan="5" style="text-align: center;">BROOK CROMPTON</td> </tr> <tr> <td colspan="5" style="text-align: center; font-size: x-small;">Keeping Industry Turning</td> </tr> </table>					Total	Pages	Page			BROOK CROMPTON					Keeping Industry Turning				
Total	Pages	Page																	
BROOK CROMPTON																			
Keeping Industry Turning																			

WPN-DP213TSC-2C					
Revision					
Design by	Checked by	Reviewed by	Date	Sign	Date