

Product Information Packet

February 22, 2024

Data shown is for the current revision model #. Ensure your nameplate model # matches.

Model Number:	WPN-DF132SH-2C
Catalog Number:	BC2M010V5C
Connection Diagram:	See Page 4
Outline Drawing:	See Page 3

Table of Contents

Specification	01
Performance Characteristics	02
Outline Drawing	03
Connection Drawing(s)	04

Marks:

MODEL NUMBER:	BC2M010V5C	Estimated Weight:	150 Lbs
Outline Drawing:	See Page 3	Time Rating:	S1
Connection Diagram:	See Page 4	Enclosure:	TEFC
Design Code:	B	Encl Construction:	GP
Type:	KS	Ambient Max(°C):	40
Frame:	H132	Alt Ambient Max(°C):	40
Phases:	3	Insulation Class:	F
Poles:	2	NEMA Design:	B
Output Power:	10HP	Nominal Efficiency:	90.2 %
RPM:	3510	Guaranteed Efficiency:	88.5 %
Voltage:	575	3/4 Load Efficiency:	90.5 %
Hertz:	60	KVA Code:	G
Amps - FL:	9.2	Max KVAR:	6.3
Service Factor:	1.25@60Hz	Power Factor:	91%
Alt Service Factor:	1.15	Bearing - DE:	6208-ZZC3
		Bearing - ODE:	6208-ZZC3

Enclosure is Totally Enclosed Fan-Cooled

Stamped Nameplate Notes:

12-60HZ CONSTANT TORQUE, 6-60Hz VARIABLE TORQUE

CSA APPROVED FOR CLASS I; DIVISION 2; GROUPS A, B, C & D, ZONE 2; GROUPS IIA & IIB T3 WITH VFD

Additional Information:

F1/F2/F3/ROUND BODY MOUNTING USING REMOVABLE/REPOSITIONABLE FEET
 INVERTER DUTY: CT5:1(12Hz~60Hz)@100%TN, CT15:1(4Hz~60Hz)@66.7%TN, VT20:1

Performance Characteristics

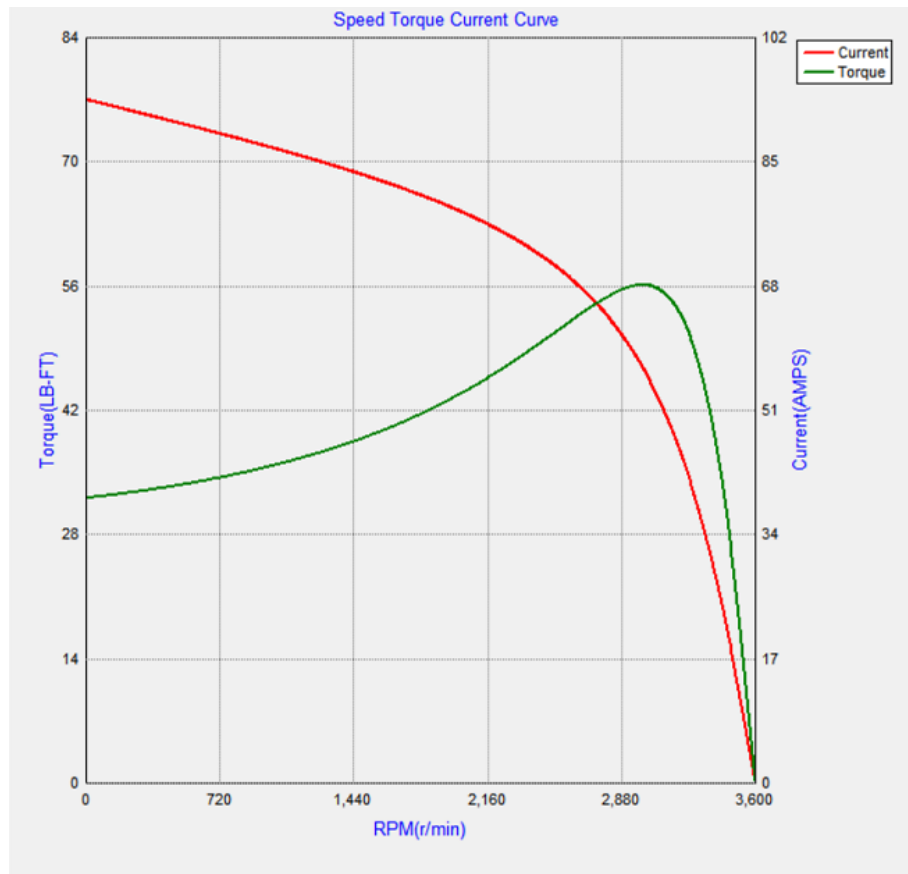
Marks:

LOAD %	150.0	125.0	100.0	75.0	50.0	25.0
% EFF	88.75	89.61	90.26	90.54	90.08	86.91
% PF	92.11	92.06	91.09	89.33	83.91	65.46
AMPS(460V)	17.3	14.3	11.5	8.73	6.23	4.14

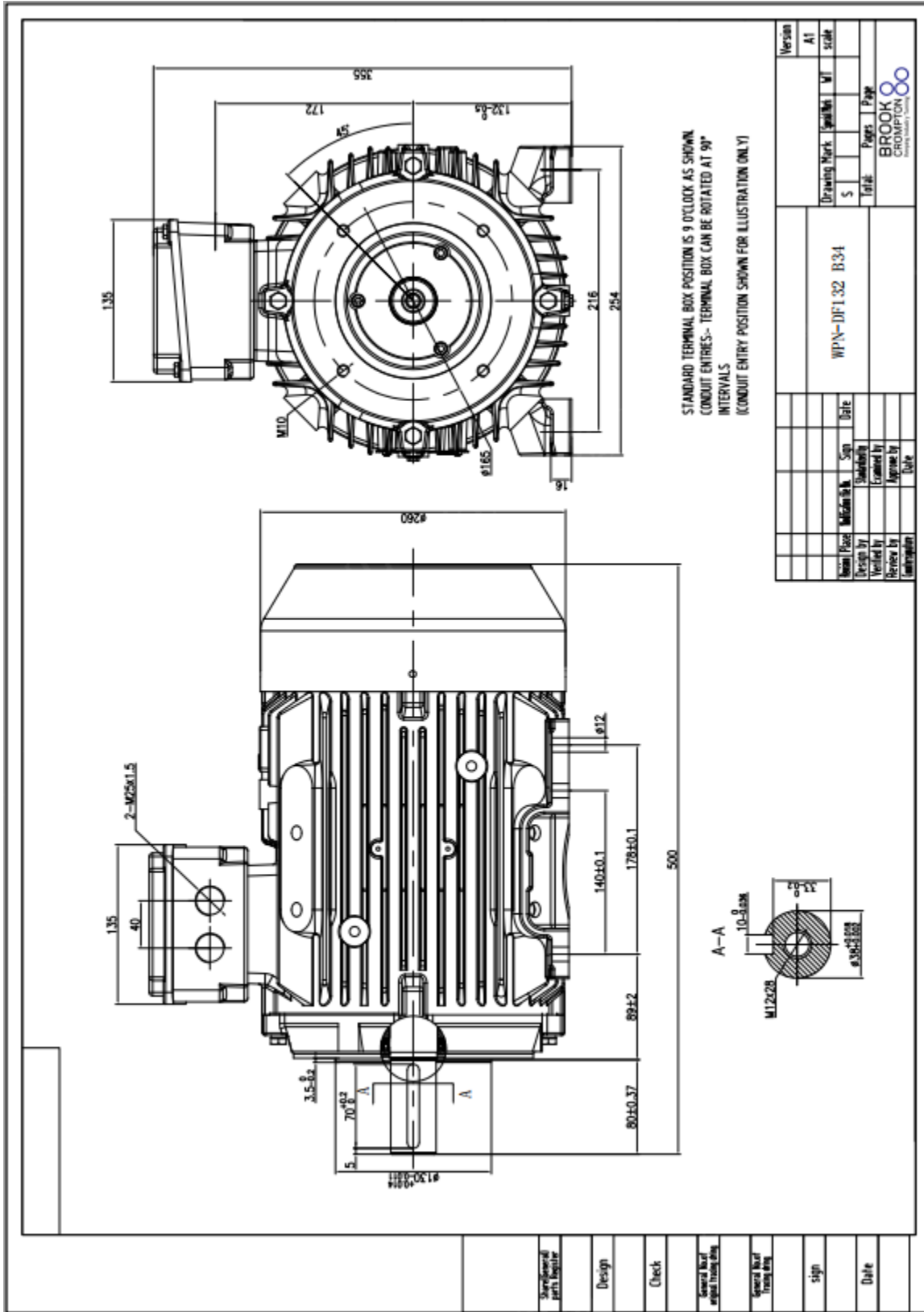
TORQUE(FL) LB-FT 20.4 TORQUE(LR)%FL 220 TORQUE(BD)%FL 370
 AMPS(LR 460V) 97.8 PF AT START 36

Other Useful Information for Application:

Rotor Inertia: Lb-Ft ² (Kg-m ²):	0.416(0.017)
Max load inertia: Lb-Ft ² (Kg-m ²):	
Load Type:	Square Torque/Speed Characteristic
Voltage:	100%
Number of starts per hour:	2 Cold or 1 Hot
Acceleration Time with maximum inertia (sec):	9.5
Safe stall time (sec): Cold/Hot	23/9



Place BC's Outline drawing



Version	AT	scale
Drawing Mark	Symbol	Unit
S		
Total	Pages	1 Page
WPN-DF1.32 B34		
BROOK CROMPTON		
KEEPING INDUSTRY TURNING		