

Product Information Packet

February 22, 2024

Data shown is for the current revision model #. Ensure your nameplate model # matches.

Model Number:	WPN-DF90LQ-2
Catalog Number:	BC2M003V4
Connection Diagram:	See Page 4
Outline Drawing:	See Page 3

Table of Contents

Specification	01
Performance Characteristics	02
Outline Drawing	03
Connection Drawing(s)	04

Marks:

MODEL NUMBER:	BC2M003V4	Estimated Weight:	90 Lbs
Outline Drawing:	See Page 3	Time Rating:	S1
Connection Diagram:	See Page 4	Enclosure:	TEFC
Design Code:	B	Encl Construction:	GP
Type:	KS	Ambient Max(°C):	40
Frame:	H90	Alt Ambient Max(°C):	40
Phases:	3	Insulation Class:	F
Poles:	2	NEMA Design:	B
Output Power:	3HP	Nominal Efficiency:	86.5 %
RPM:	3500	Guaranteed Efficiency:	84.0 %
Voltage:	208-230/460	3/4 Load Efficiency:	87.7 %
Hertz:	60	KVA Code:	G
Amps - FL:	7.09/3.55	Max KVAR:	6.3
Service Factor:	1.25@60Hz	Power Factor:	90%
Alt Service Factor:	1.15	Bearing - DE:	6206-ZZC3
		Bearing - ODE:	6205-ZZC3

Enclosure is Totally Enclosed Fan-Cooled

Stamped Nameplate Notes:

12-60HZ CONSTANT TORQUE, 6-60Hz VARIABLE TORQUE

50HZ DATA:
 190-200/400V
 8.22/4.11AMPS
 RPM 2915
 SF 1.0

CSA APPROVED FOR CLASS I;DIVISION 2; GROUPS A, B, C & D,ZONE 2; GROUPS IIA & IIB T3 WITH VFD

Additional Information:

F1/F2/F3/ROUND BODY MOUNTING USING REMOVABLE/REPOSITIONABLE FEET
 INVERTER DUTY: CT5:1(12Hz~60Hz)@100%TN, CT15:1(4Hz~60Hz)@66.7%TN, VT20:1

Performance Characteristics

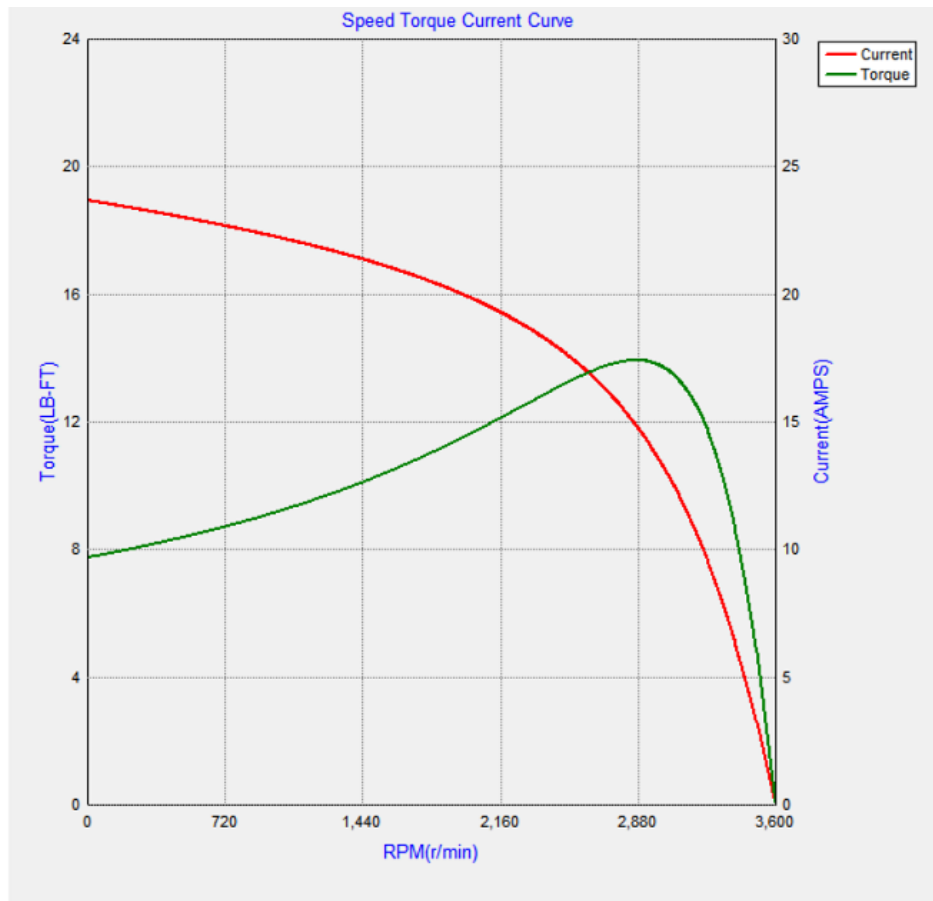
Marks:

LOAD %	150.0	125.0	100.0	75.0	50.0	25.0
% EFF	82.77	84.83	86.52	87.79	88.28	86.24
% PF	90.81	90.78	89.96	87.72	81.52	62.24
AMPS(460V)	5.51	4.48	3.55	2.69	1.92	1.29

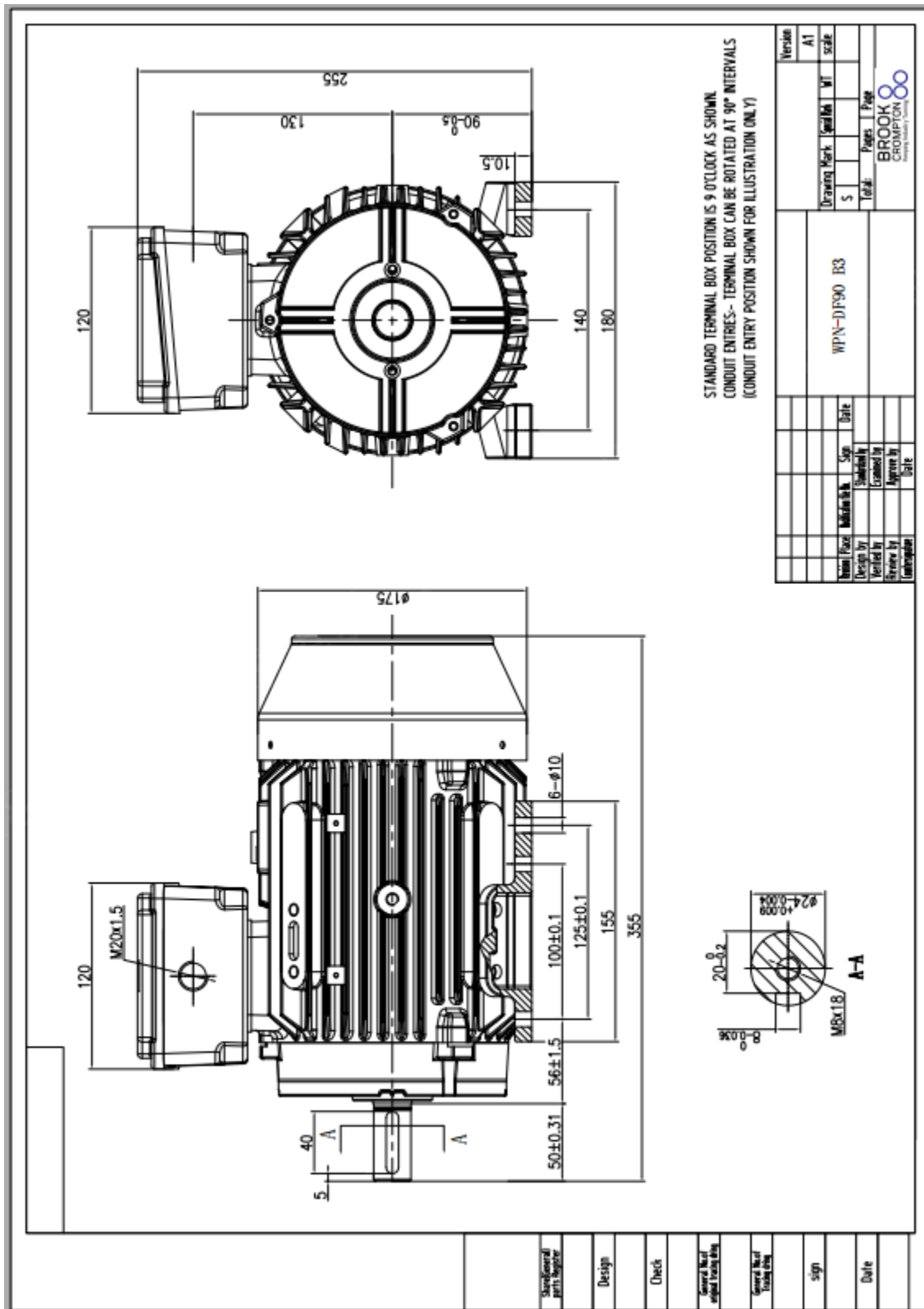
TORQUE(FL) LB-FT 6.00 TORQUE(LR)%FL 175 TORQUE(BD)%FL 310
 AMPS(LR 460V) 24.5 PF AT START 33

Other Useful Information for Application:

Rotor Inertia: Lb-Ft ² (Kg-m ²):	0.121(0.005)
Max load inertia: Lb-Ft ² (Kg-m ²):	
Load Type:	Square Torque/Speed Characteristic
Voltage:	100%
Number of starts per hour:	2 Cold or 1 Hot
Acceleration Time with maximum inertia (sec):	7.0
Safe stall time (sec): Cold/Hot	26/10



Place BC's Outline drawing



Version	A1	scale	
Drawing Mark	WPN-DP90 B3	WT	
S	Pages	1	Page
Total	BROOK CROMPTON		
Energy. Motion. Control.			

Checked/General parts Register	Design	Check	General part applied/checked/checked	General part checked/checked	sign	Date
--------------------------------	--------	-------	--------------------------------------	------------------------------	------	------

Marks:

Connection Diagram

