

Product Information Packet

February 22, 2024

Data shown is for the current revision model #. Ensure your nameplate model # matches.

Model Number:	WPN-DA90SP-4C
Catalog Number:	BA4M1.5V4C
Connection Diagram:	See Page 4
Outline Drawing:	See Page 3

Table of Contents

Specification	01
Performance Characteristics	02
Outline Drawing	03
Connection Drawing(s)	04

Marks:

MODEL NUMBER:	BA4M1.5V4C	Estimated Weight:	40 Lbs
Outline Drawing:	See Page 3	Time Rating:	S1
Connection Diagram:	See Page 4	Enclosure:	TEFC
Design Code:	B	Encl Construction:	GP
Type:	KS	Ambient Max(°C):	40
Frame:	H90	Alt Ambient Max(°C):	40
Phases:	3	Insulation Class:	F
Poles:	4	NEMA Design:	B
Output Power:	1.5HP	Nominal Efficiency:	86.5 %
RPM:	1750	Guaranteed Efficiency:	84.0 %
Voltage:	208-230/460	3/4 Load Efficiency:	86.2 %
Hertz:	60	KVA Code:	K
Amps - FL:	4.09/2.05	Max KVAR:	9
Service Factor:	1.25@60Hz	Power Factor:	78%
Alt Service Factor:	1.15	Bearing - DE:	6205-ZZC3
		Bearing - ODE:	6203-ZZC3

Enclosure is Totally Enclosed Fan-Cooled

Stamped Nameplate Notes:

12-60HZ CONSTANT TORQUE, 6-60Hz VARIABLE TORQUE

50HZ DATA:
190-200/400V
4.84/2.42AMPS
RPM 1455
SF 1.0

CSA APPROVED FOR CLASS I;DIVISION 2; GROUPS A, B, C & D,ZONE 2; GROUPS IIA & IIB T3 WITH VFD

Additional Information:

F1/F2/F3/ROUND BODY MOUNTING USING REMOVABLE/REPOSITIONABLE FEET
INVERTER DUTY: CT5:1(12Hz~60Hz)@100%TN, CT15:1(4Hz~60Hz)@66.7%TN, VT20:1

Performance Characteristics

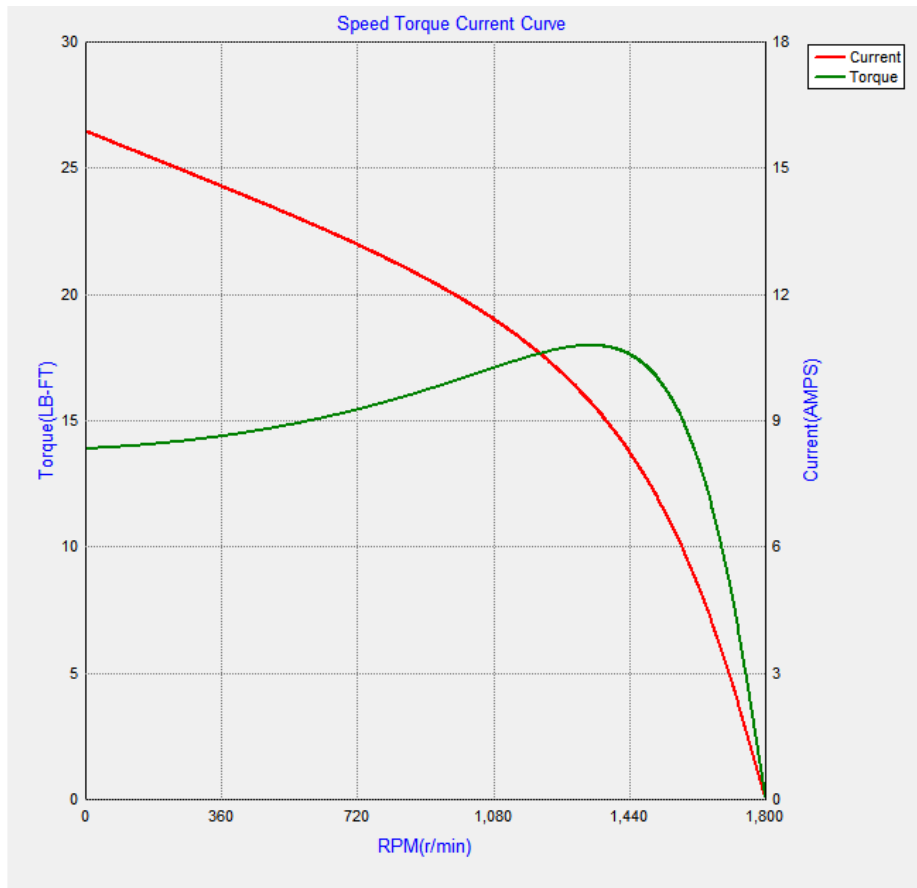
Marks:

LOAD %	150.0	125.0	100.0	75.0	50.0	25.0
% EFF	85.22	86.09	86.51	86.24	84.45	77.56
% PF	83.92	81.85	78.96	71.15	58.77	37.03
AMPS(460V)	2.90	2.45	2.03	1.69	1.39	1.20

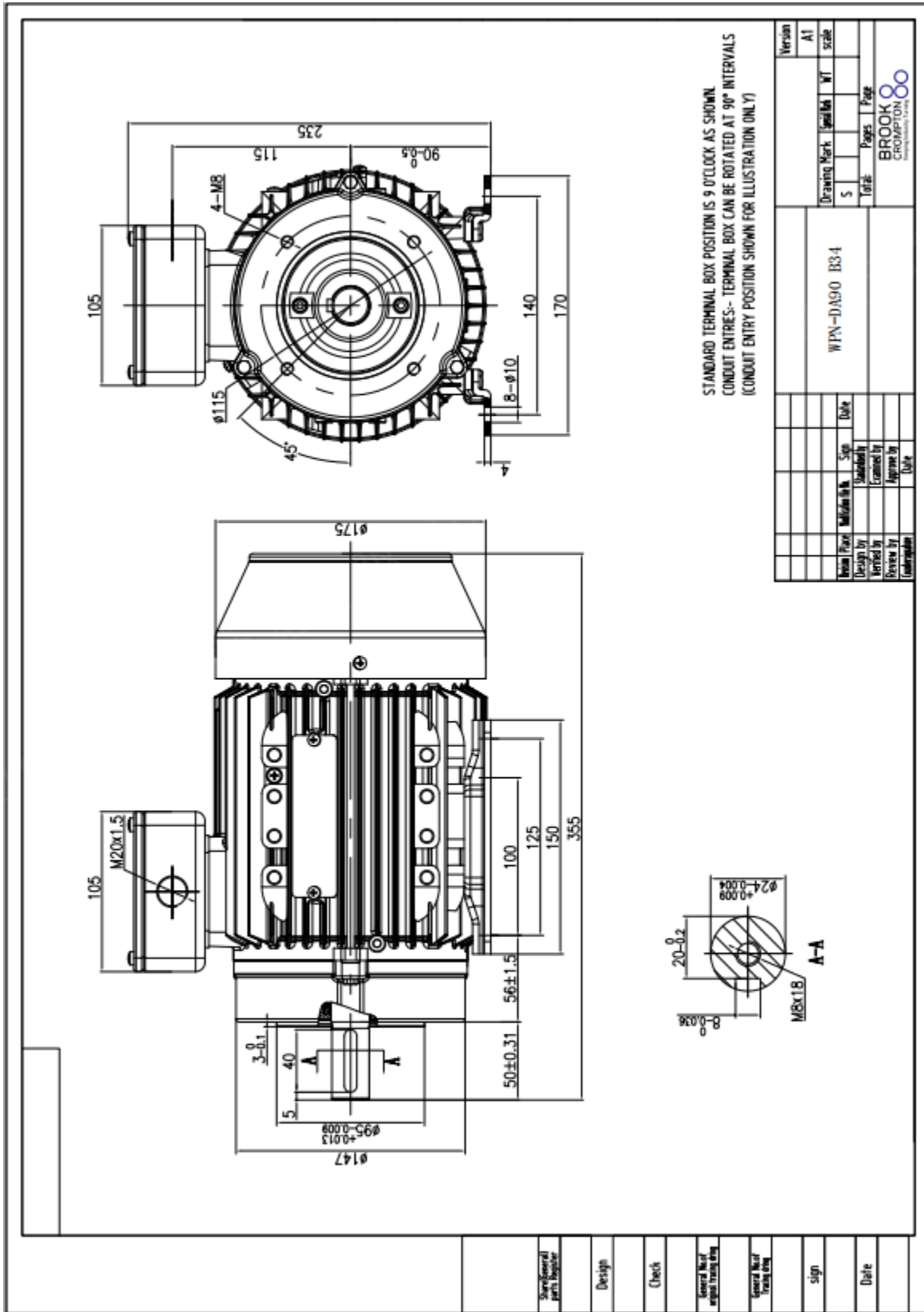
TORQUE(FL) LB-FT 6.00 TORQUE(LR)%FL 310 TORQUE(BD)%FL 380
 AMPS(LR 460V) 16.52 PF AT START 18

Other Useful Information for Application:

Rotor Inertia: Lb-Ft ² (Kg-m ²):	0.088(0.004)
Max load inertia: Lb-Ft ² (Kg-m ²):	
Load Type:	Square Torque/Speed Characteristic
Voltage:	100%
Number of starts per hour:	2 Cold or 1 Hot
Acceleration Time with maximum inertia (sec):	6.1
Safe stall time (sec): Cold/Hot	43/17



Place BC's Outline drawing



Version	AT	scale
Drawing Mark	Serial No	WT
S		
Total: Pages 1 Page		
WPN-DAS90 B3-4		
Design	Checked	Date
Drawn	Reviewed	Date
Verified	Approved	Date
Reviewed	Approved	Date
Undergoing		

Marks:

Connection Diagram

