



International projects

**Chemicals and petrochemicals,
power, general,
oil and gas**

International projects

Brook Crompton

Brook Crompton is a leading manufacturer of electric motors for the global industrial market, with motor solutions which benefit a wide range of customers.

Our products are used in almost every industrial activity including water treatment, building services, chemical/petrochemicals, general processing and manufacturing where they drive fans, pumps, compressors and conveyors, amongst other things.

Brook Crompton incorporates many well known names including Brook Motors, Crompton Parkinson, Electrodrives, Newman, Bull Electric and Hawker Siddeley Electric Motors.

We have extensive stocks of motors around the world, backed-up by a network of distributors, ensuring excellent local support wherever needed.

Projects Department

The centralised Projects Department has a wealth of experience in the precise scheduling and supply of drive units for a diversity of international projects.

Supported by accumulated resources of technical know-how and commercial expertise, we have the capability to specify

and co-ordinate large quantities of motors for 'on-time' delivery to major contracts in all parts of the world - projects ranging from oil and gas exploration and development to chemicals, food processing, transport infrastructure and power generation.

Individual contracts are handled by a dedicated team of project engineers, totally familiar with individual clients' specifications and requirements, and all contractual proceedings are in accordance with ISO9001 documented quality systems.

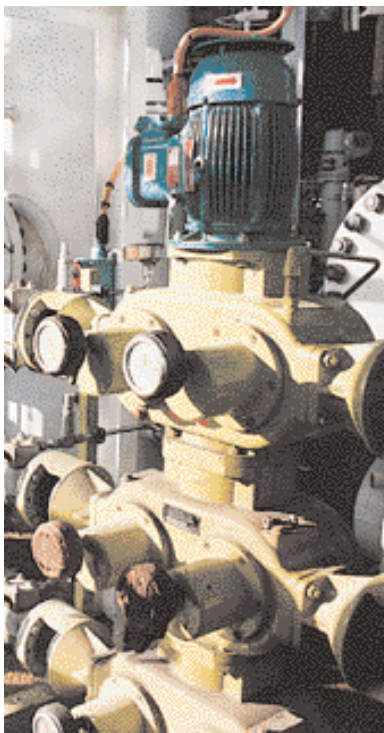
The department provides a comprehensive service - from initial concept to completion - using CAD design facilities and in-house engineering and manufacturing expertise at all stages of the contract. Our cost-effective service extends far beyond the preparation of tenders and proposals however - it also includes the provision of preliminary pre-contract advice, direct continuous liaison with clients, main contractors, and sub-contractors, and the handling of any special technical or commercial customer requirements.

Brook Crompton's reputation has been built on the experience and customer satisfaction gained through involvement with numerous projects for some of the world's leading international companies.

Using state-of-the-art technology

Brook Crompton electric motors are designed and manufactured in some of the most modern plants in the world.

Our wide range of motors can be supplied with outputs ranging from a few watts ac, to 750kW dc, and includes machines which are capable of withstanding extreme climatic conditions - from the sub-zero temperatures of Siberia to the intense heat of the Sahara and from salt-laden, sea-level atmospheres to the rarified air of the Andes. Our 'Monsoon' tropical treatment range of motors has been specially developed for climates of extreme temperatures and humidity.



The Brook Crompton projects service includes:-

- pre-contract advice and consultancy
- proposals and tenders
- centralised co-ordination of contract
- precise scheduling of motors
- dedicated project engineers assigned to individual projects
- technical and commercial back-up
- special design services
- continuous customer/contractor liaison



Recent projects worldwide

Chemicals and petrochemicals

Contractor	Plant/location	Client
Toyo Engineering	Kerteh - Malaysia	Aromatics Malaysia
Toyo Engineering	Kerteh - Malaysia	Vinyl Chloride (Malaysia)
Snamprogetti	Fertiliser Plant - Venezuela	Pequiven-Koch
Foster Wheeler	PTA Plant - Pakistan	DuPont
Bechtel	PTA Plant - Saudi Arabia	Arabian Industrial Fibres
Snamprogetti	Alpha-Alcohols Plant - China	Jilin Chemical Ind
JGC	Sriracha Base Oil - Thailand	Thai Lube Base Co
Kvaerner	PTA Plant - Indonesia	Petrokema
Jacobs Engineering	Pharmaceuticals - Ireland	Wyeth-Ayerst
Jacobs Lend Lease	Pharmaceuticals - Singapore	Pfizer/Parke Davis
ABB Lummus Global	Moerdijk - Netherlands	Shell Chemie BV
Kvaerner Engineering	Seal Sands - UK	Ineos Acrylics
ABB Lummus Global	Seraya - Singapore	Seraya Chemicals
Kvaerner Process	Swords Laboratories - Ireland	Bristol Myers Squibb
Foster Wheeler	Pharmaceuticals - Singapore	Schering Plough
Jacobs Engineering	Avon - Bristol	Astra Zeneca

Power

Contractor	Plant/location	Client
GEC Alstom PP	Ling Ao Power Station - China	Ling Ao Nuclear Power
Alstom Power Plants	Power Station - Taiwan	Ho-Ping Power
GEC Alstom PP	Sual Power Station - Philippines	Pangasinan Electrical Co
IHI	Seraya Power Station - Singapore	Public Utilities Board
Alstom Automation	Tamnín - Mexico	TEG
Mitsubishi Heavy Ind	Kangol - Turkey	TEK
Alstom Power	Can - Turkey	Turkish Electricity
Alstom Energy	Manjung - Malaysia	TNB Janamanjng



Recent projects worldwide

General

Contractor	Plant/location	Client
ASC Materials Handling	Grain Terminal - China	Dalian Xizui Grain Terminal
Yarrow Shipbuilders	Offshore Patrol Vessels - UK	Royal Brunei Navy
Meyer Werft	Aurora Cruise Liner - Germany	P & O Cruise Liners
Kilborn - ENKA	Gold Mine - Kyrgyzstan	Kumtor Gold
Bi-water	Mafraq Water Treatment - UAE	Government
Drake & Skull	Jubilee Line - UK	London Underground
Metro de Caracas (In house)	Caracas Metro - Venezuela	C A Metro de Caracas
Fluor Daniel	Paper Mill - UK	Bridgewater Paper
Fives-Cail Babcock	Cement Plant - Qatar	QNCC
Davy McKee	Kwang Yang Steel Works - Korea	Pohang Iron & Steel
Andritz AG	Sludge Drying Plant - Scotland	Scottish Water
MHI	Nagasaki Shipyard - Japan	P & O Cruise Liners
Ford (In house)	Puma & Lynx Engine Plants - UK	Ford Motor Co
GE Supplies	Engine Plants - UK & Germany	General Motors

Oil & Gas

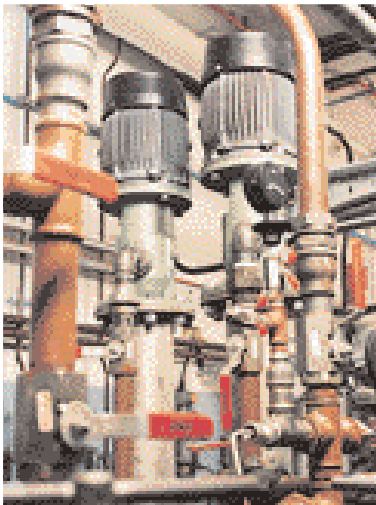
Contractor	Plant/location	Client
JGC	Hawaya Natural Gas - Saudi Arabia	Aramco
Kvaerner Oil & Gas	Captain Field Development - North Sea	Texaco
LG/Lurgi Consortium	NODCO Expansion Project - Qatar	NODCO
Snamprogetti	Ruwais Refinery Expansion - Abu Dhabi	ADNOC
Snamprogetti	ASAB Gas Development - Abu Dhabi	ADNOC
SNC Lavalin	Volgograd Refinery Modification - Russia	Lukoil
Kvaerner Oil & Gas	Abbot Field - North Sea	Amerada Hess
Terra Nova Alliance	FPSO - Offshore Canada	Petro-Canada
Chiyoda/Foster Wheeler	LNG Project - Oman	Oman LNG
JGC/Kellogg JV	LNG Plant - Qatar	Ras Laffan LNG Co
Brown & Root	ETAP Project - North Sea	BP
Daelim Engineering	Compressor Station - Iran	National Iranian Gas
Brown & Root	Alba Field - North Sea	Chevron
AMEC	Curlew Field - North Sea	Shell
AMEC	Britannia Field - North Sea	Conoco
Engineers India	Bombay High Platform - India	ONGC
Brown & Root	Liverpool Bay Development - Irish Sea	BHP Petroleum
Brown & Root/Aker Engineering	Ula Field - Norwegian North Sea	Phillips
R M Parsons	Kalundborg Condensate - Denmark	Statoil
AMEC	Bonga Field - Nigeria	Shell Nigeria
Technip Italy	Haradh Gas - Saudi Arabia	Saudi Aramco
AMEC	Berri Gas - Saudi Arabia	Saudi Aramco
Snamprogetti	Bhit Field - Pakistan	Lasmo Oil
Bechtel/Snamprogetti	Karachaganak - Kazakhstan	BG/Agip/Lukoil
Parsons/Fluor Daniel	Tengiz - Kazakhstan	Tengizchevroil

Global capacity

Brook Crompton has a distinguished record of engineering achievement which goes back to the early 1900s. As one of Europe's largest electric motor manufacturers, Brook Crompton has invested heavily in new production techniques and design technology factors which have enabled it to lead the industry with innovative designs and high quality products.

A large selection of single and three phase motors for various voltages can be supplied from both UK and international stock bases.

A network of subsidiary companies and distributors worldwide, provide sales and service back up for Brook Crompton products.



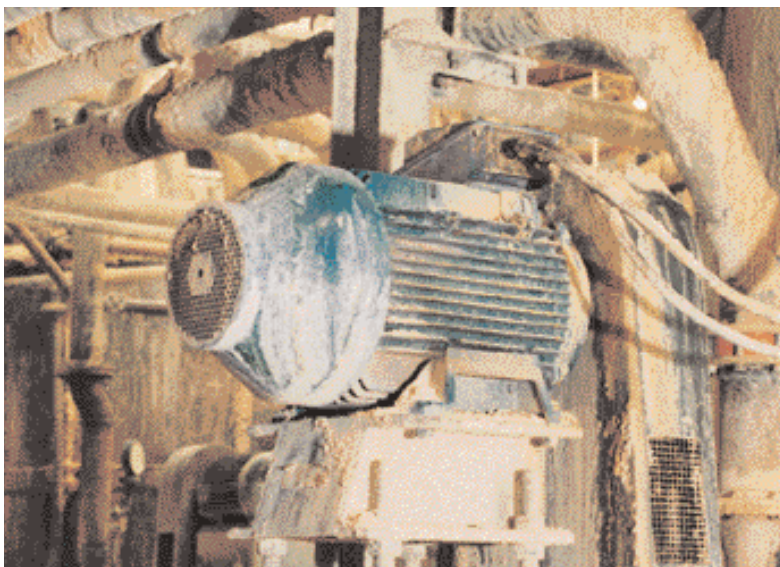
Quality testing

All motors are inspected to strict engineering tolerances, and are subjected to mechanical and electrical tests at intermediate and final stages of manufacture. Individual motors are also tested to specific customer requirements.

Quality assurance

Stringent quality procedures are observed from first design to finished product in accordance with the ISO9001 documented quality systems.

All of our factories have been assessed to meet these requirements, a further assurance that only the highest possible standards of quality are accepted.



The Brook Crompton range of motors includes :-

Standard ac

Frames 63 - 355, up to 650kW

Aluminium, cast iron and steel construction

- TEFV and drip proof
- single and three phase
- cage rotor
- wound rotor
- multi-speed
- CSA approved
- NEMA & EEMAC
- energy efficient & high efficiency 'W' designs
- brake motors
- inverter motors
- variable speed motors
- 'Monsoon' tropical treatment
- marine
- crane
- smoke extraction
- Argus 55

Hazardous areas ac

Frames 63 -355, up to 500kW

- zone 1 EEx d, EEx de
- zone 1 EEx e
- zone 2 Ex N/Ex nA
- CSA, NEMA & CENELEC approved
- MEx for mines
- flameproof brake motors
- dust ignition proof
- low ambient certification

also packages including:

industrial dc motors

variable speed drives

HV motors

Rotating Electrical Machines

Every care has been taken to ensure the accuracy of the information contained in this publication, but, due to a policy of continuous development and improvement the right is reserved to supply products which may differ slightly from those illustrated and described in this publication



**BROOK
CROMPTON**

Brook Crompton
St Thomas' Road Huddersfield
West Yorkshire HD1 3LJ UK
Tel: +44 (0) 1484 557200
Fax: +44 (0) 1484 548718
E-mail: csc@brookcrompton.com
Internet: www.brookcrompton.com

Printed in England
njh064/LF/C/05/02 2214E issue 1
© Copyright 2002. Brook Crompton. All rights reserved.